

GRINDING AND POLISHING HEAD

Through the individual pressure of the Rubin 520, samples with different diameter and materials can be worked at the same time. It also has a memory function for the side and height setting. The grinding and polishing head Rubin 520 is operated via a clearly laid out touch-display. Programs can be compiled here and then saved. Furthermore it is fitted with a quick-change function for the sample holders and clockwise and anticlockwise running directions.

VARIABLE SPEED

The display on the grinder and polisher shows the speed digitally. The base speed can be infinitely adjusted between 50 and 450 rpm. The head speed is separately adjustable between 30 and 150 rpm. The speed can also be changed during the working sequence.



MATERIAL REMOVED MEASUREMENT

The removal height can be pre-determined with 0.01 mm accuracy. The material removed measurement takes place automatically. After reaching the preset value, the machine switches off.

Saphir 560 | Rubin 520

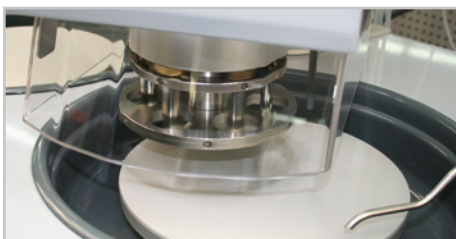
The SAPHIR 560 WITH RUBIN 520 is a twin wheel grinder and polisher of recent generation with an innovative grinding and polishing head for working wheels \varnothing 250 - 300 mm. The grinding and polishing head 520 is equipped with an automatic protective hood and sets a new standard for

operational safety. Single and central pressure, memory function, integrated dosing system, material removed measurement are only a few of the possibilities. Motor-driven height setting with pneumatic clamping and all characteristics of the basic unit Saphir 350 meet the highest demands.

WATER

The automatically switched integrated basin rinsing is cooling the working wheel and cleaning the basin during the entire working process. The rinsing tap can be pulled out with the hose extension.

Optimum distribution of water can be reached by swinging the tap left and right across the diameter of the working wheel.



SAFETY

The preparation only starts when the transparent protective hood is extended. The working area is illuminated by energy-saving LEDs. Data safety is secured by enabling password protection for each individual program.

BASIC MODULE

SAPHIR 560 | RUBIN 520



Order No.: M5600160

- » double wheel grinder/polisher with Rubin 520 head
- » single and central pressure
- » variable speed of base and head
- » electronic control with touch display
- » programmable memory
- » polishing Head: clockwise/anti-clockwise rotation
- » memory function for side and height adjustment
- » automatic protective hood
- » energy saving LED illumination of working area
- » integrated basin rinsing with cleaning and cooling function
- » automatic water solenoid
- » aluminium case, powder coated
- » impact-proof plastic bowl
- » incl. splashing ring and cover
- » e-Lab-ready

EQUIPMENT

POWER SUPPLY



Equipment 1

Equipment 2

230 V/50 Hz (1Ph/N/PE)**110 V/60 Hz (1Ph/N/PE)**

Order No.: A5600055

Order No.: A5600056

CONTROLLED REMOVAL



Equipment 1

Equipment 2

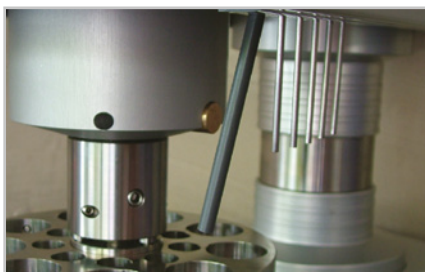
without controlled removal**with controlled removal**

Order No.: A5600053

Order No.: A5600054

OPTION

DOSING UNIT

**for Rubin 520**

Order No.: A5400001

- » integrated dosing nozzles
- » controllable via touch screen, incl. memory function
- » 4x diamond suspension dosing
- » 1x lubricant dosing
- » 1x oxide polishing dosing



ACCESSORIES



BOTTLE HOLDER FOR DIAMOND SUSPENSION



for Rubin 520

Order No.: Z5410006

» aluminium, powder coated

WxHxD 290x185x120 mm

SETTLING TANK



» 2-chamber-compartment, 45 ltr.

» inlet sieve and filter bag



for System lab cabinet
(insertion mechanism)

referring height of System cabinet

H 800 mm Order No.: A5810261

H 900 mm Order No.: A5810237



mobile

Order No.: A5800496

CONNECTION SET



Order No.: Z5600009

1 drain tube	Ø 40 mm; 1.5 m
1 pressure tube	R 1/2"; 2 m
1 pressure tube	R 3/8" coupling and screw thread; 3 m

SPECIFICATIONS

Connected load	5.5 kVA
Power supply	1 230 V/50 Hz (1Ph/N/PE)
	2 110 V/60 Hz (1Ph/N/PE)
SAPHIR 560	
Working wheel	Ø 200 – 300 mm
Variable speed	50 – 600 rpm
RUBIN 520	
Single pressure	1 – 6 samples, Ø 50 mm
Central pressure	depends on sample holder

Variable speed	30 – 150 rpm
Pressure	variable
Single pressure	5 – 100 N
Central pressure	20 – 400 N
WxHxD approx.	1020x 550 – 650 x 660 mm
Weight approx.	110 kg

